

FISH BOT



USER MANUAL

R23Team

<https://bdo.r23.ru>

TABLE OF CONTENTS

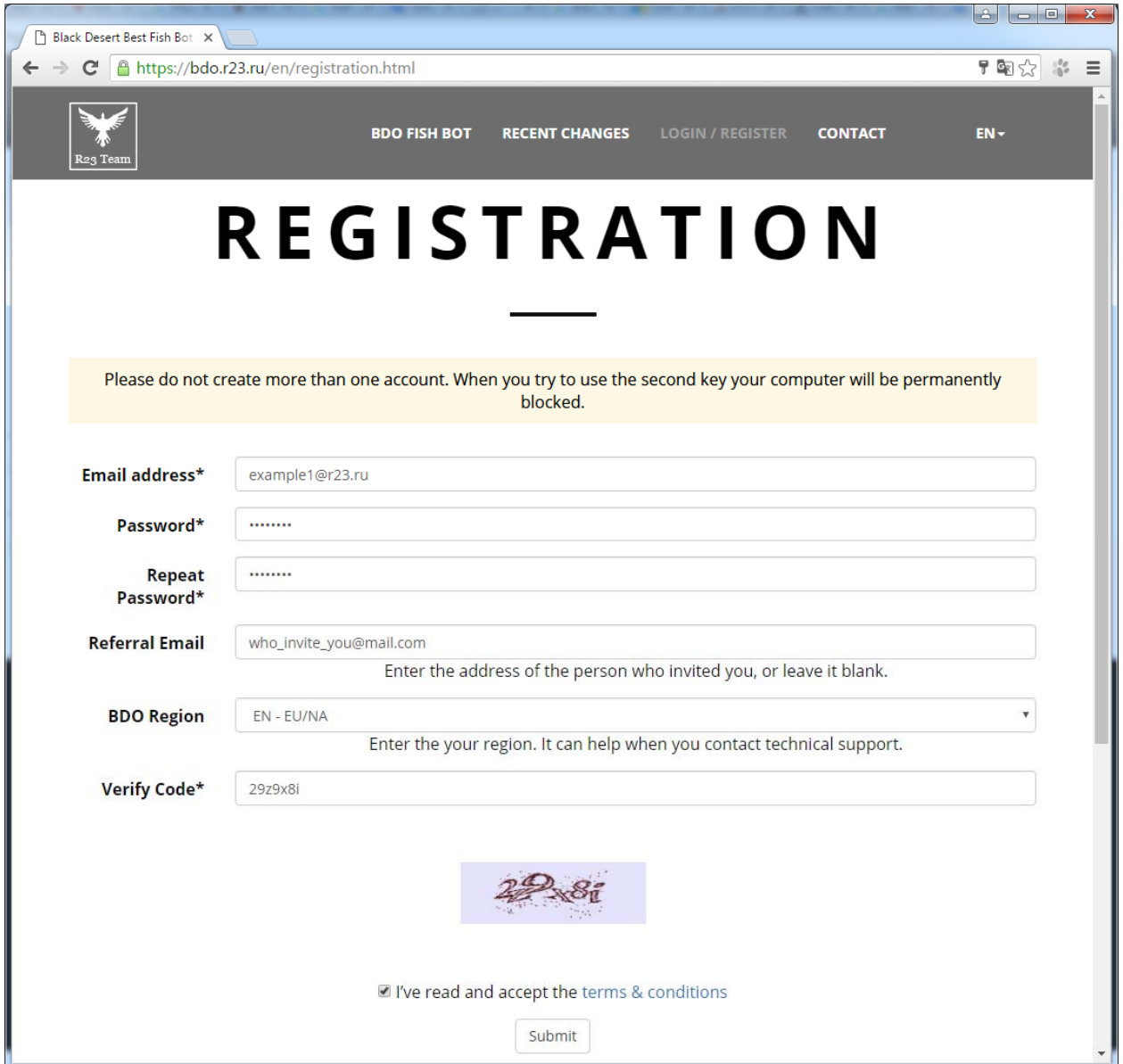
Site Registration	2
Getting Trial Key for Bot.....	4
Installation, initial start-up and setting the bot	6
Use Bot	12
Hot Keys	13
Troubleshooting	14

Site Registration

In order to register on the site, you need to

- 1) Enter to the site
- 2) Press the button «Login / Register»
- 3) Click on button «Register»

Or click on the link <https://bdo.r23.ru/en/registration.html>

A screenshot of a web browser showing the registration page for Black Desert Online (BDO). The browser's address bar displays the URL "https://bdo.r23.ru/en/registration.html". The page features a dark navigation bar with a logo on the left and menu items: "BDO FISH BOT", "RECENT CHANGES", "LOGIN / REGISTER", "CONTACT", and "EN". The main heading is "REGISTRATION" in large, bold, black letters. Below the heading is a yellow warning box with the text: "Please do not create more than one account. When you try to use the second key your computer will be permanently blocked." The registration form consists of several fields: "Email address*" with the value "example1@r23.ru"; "Password*" with masked characters "....."; "Repeat Password*" with masked characters "....."; "Referral Email" with the value "who_invite_you@mail.com" and a note "Enter the address of the person who invited you, or leave it blank."; "BDO Region" with a dropdown menu showing "EN - EU/NA" and a note "Enter the your region. It can help when you contact technical support."; and "Verify Code*" with the value "29z9x8i". Below the form is a CAPTCHA image showing the text "29z9x8i" in a stylized font. At the bottom, there is a checkbox labeled "I've read and accept the terms & conditions" and a "Submit" button.

Please complete all fields marked with an asterisk and click on the Submit button

Notes:

- 1) In the «Email address» specify a valid Email.
It is desirable that the Email does not match the Email where you are registered in the game.
Do not use disposable or temporary Email, it will lead to account suspension.

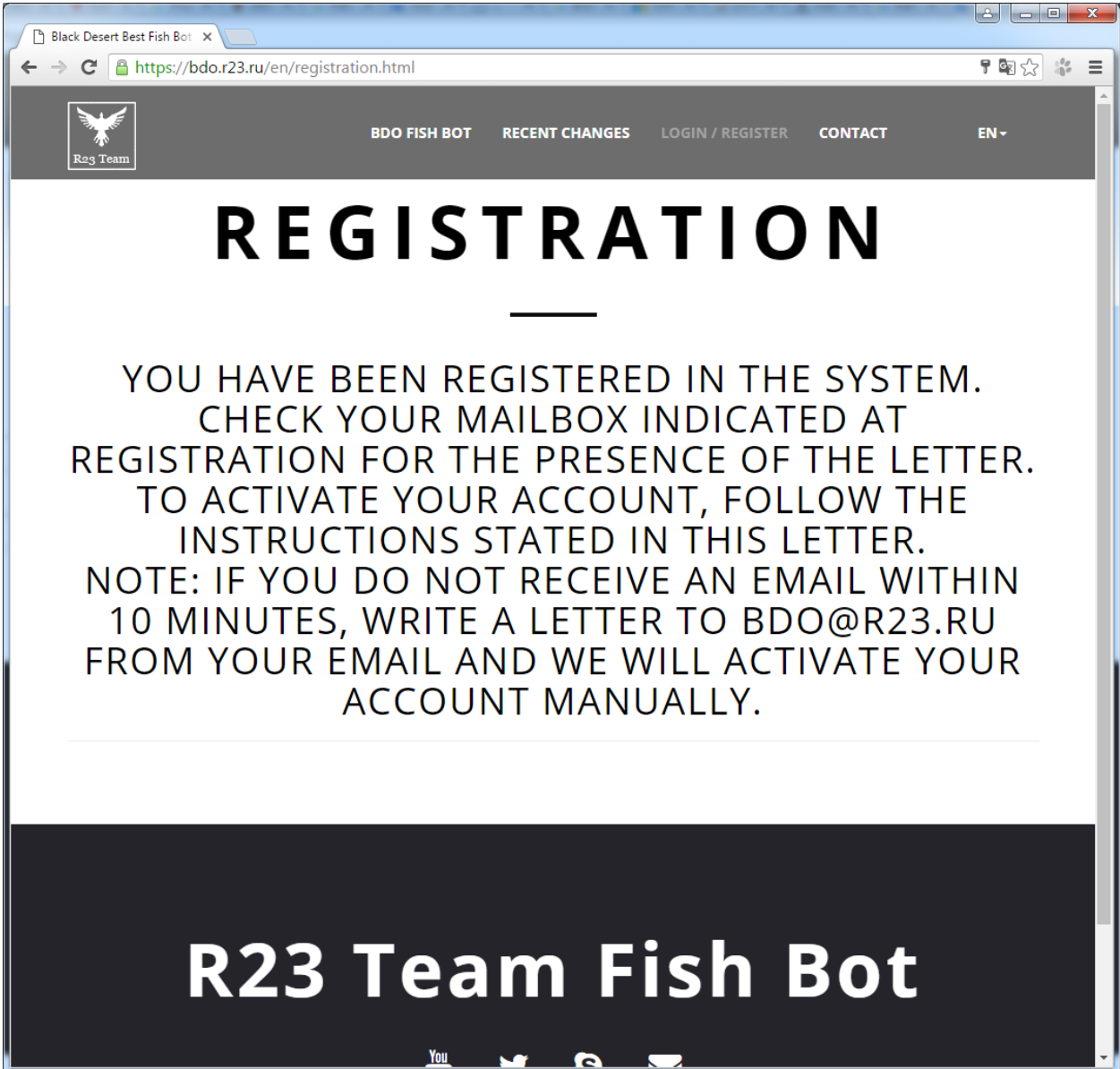
2) Do not create multiple accounts.

This will lead to a permanent automatic blocking of all accounts and your computer (bot will not / will cease to run on your computer).

3) Password.

Minimal length of password 8 symbols.

4) Field «Referral Email» fill only if you are invited subscriber from bdo.r23.ru service.



The screenshot shows a web browser window with the address bar displaying <https://bdo.r23.ru/en/registration.html>. The page features a dark navigation bar with a logo on the left and menu items: BDO FISH BOT, RECENT CHANGES, LOGIN / REGISTER, CONTACT, and EN. The main content area has a large heading "REGISTRATION" followed by a horizontal line. Below the line, the text reads: "YOU HAVE BEEN REGISTERED IN THE SYSTEM. CHECK YOUR MAILBOX INDICATED AT REGISTRATION FOR THE PRESENCE OF THE LETTER. TO ACTIVATE YOUR ACCOUNT, FOLLOW THE INSTRUCTIONS STATED IN THIS LETTER. NOTE: IF YOU DO NOT RECEIVE AN EMAIL WITHIN 10 MINUTES, WRITE A LETTER TO BDO@R23.RU FROM YOUR EMAIL AND WE WILL ACTIVATE YOUR ACCOUNT MANUALLY." At the bottom of the page, there is a dark footer with the text "R23 Team Fish Bot" and social media icons.

REGISTRATION

YOU HAVE BEEN REGISTERED IN THE SYSTEM.
CHECK YOUR MAILBOX INDICATED AT
REGISTRATION FOR THE PRESENCE OF THE LETTER.
TO ACTIVATE YOUR ACCOUNT, FOLLOW THE
INSTRUCTIONS STATED IN THIS LETTER.
NOTE: IF YOU DO NOT RECEIVE AN EMAIL WITHIN
10 MINUTES, WRITE A LETTER TO BDO@R23.RU
FROM YOUR EMAIL AND WE WILL ACTIVATE YOUR
ACCOUNT MANUALLY.

R23 Team Fish Bot

Check your email you specified during registration to get the activation email:

Just one more step!

Hi from R23Team.

Email verification is required in order to effectively use your BDO BOTS Account.

BDO BOTS Account:

example@r23.ru

Please click the button below to complete your email verification.

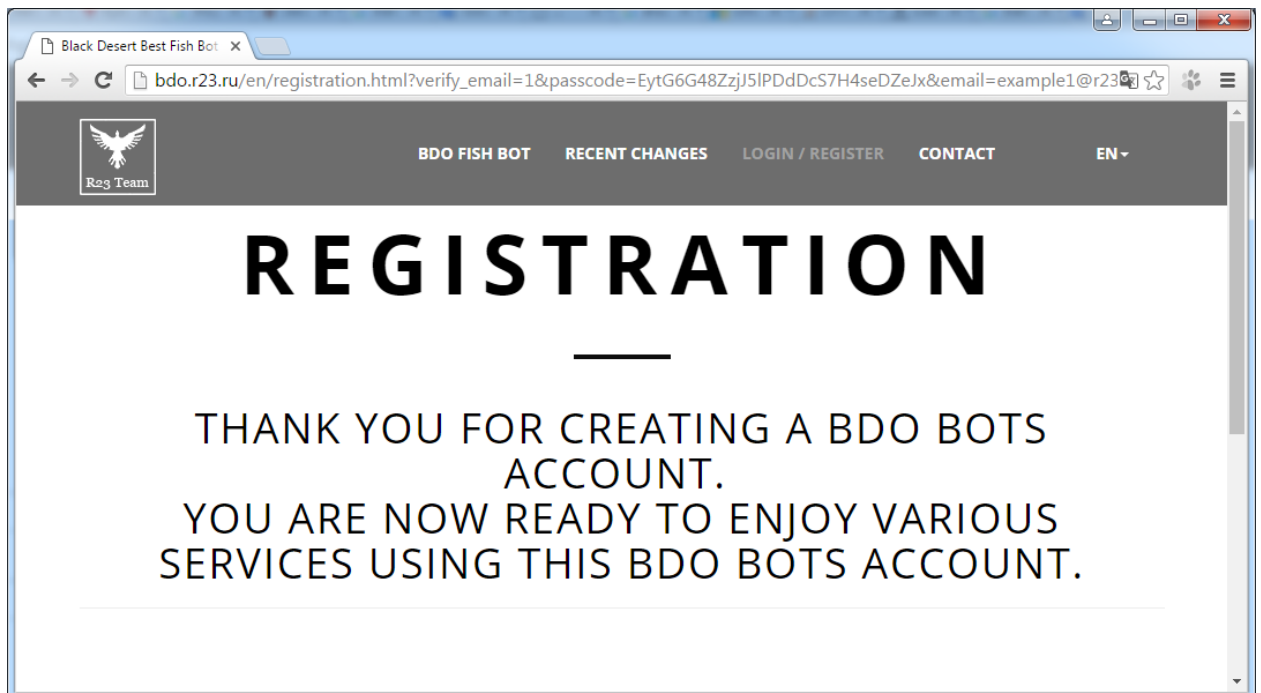
If you did not create a BDO BOTS Account and received this email, please DO NOT click the button.

[Verify Now](#)

What is a BDO BOTS Account?

BDO BOTS Account is an integrated account that allows you to enjoy various BDO BOTS services with a single registration.
With regards, R23Team

Click on the button in the letter «Verify Now».



Your account has been activated successfully.

Getting Trial Key for Bot

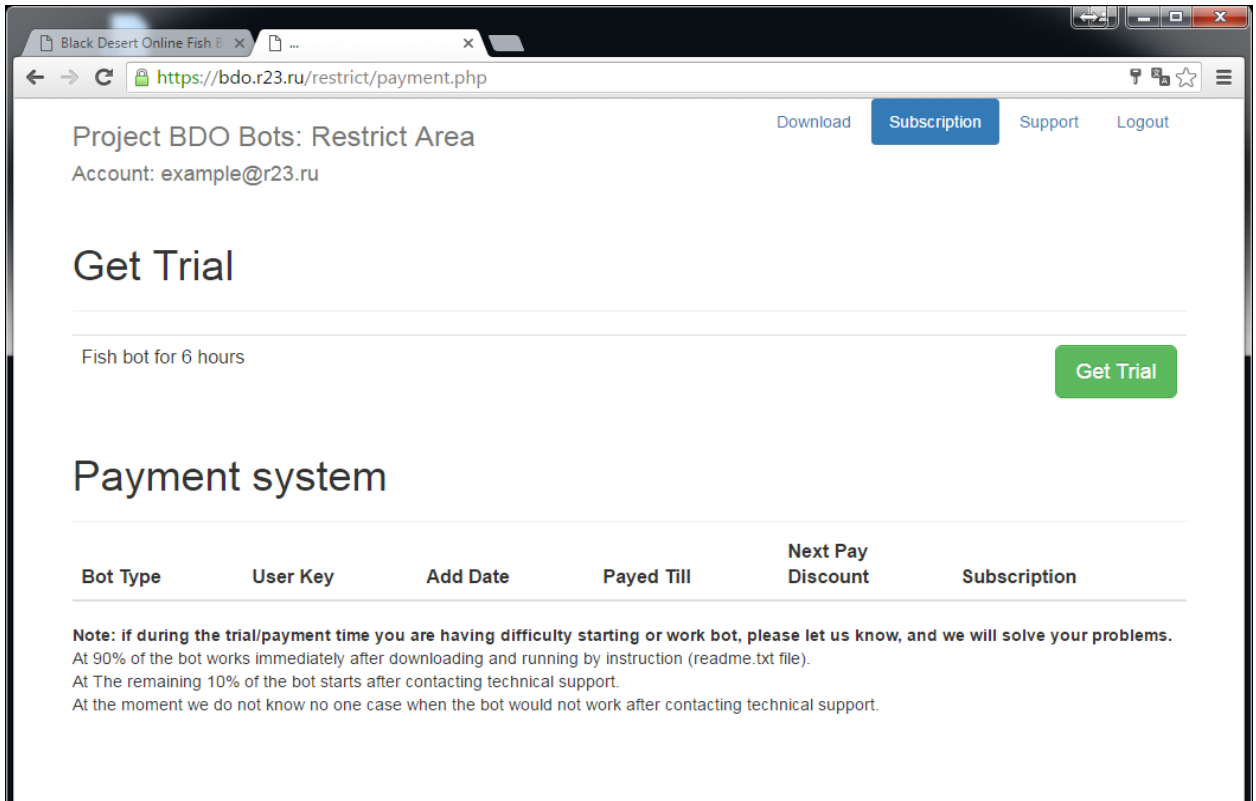
In order to log in on the website, you need to:

- 1) Login to the site.
- 2) Press the button «Login / Register».

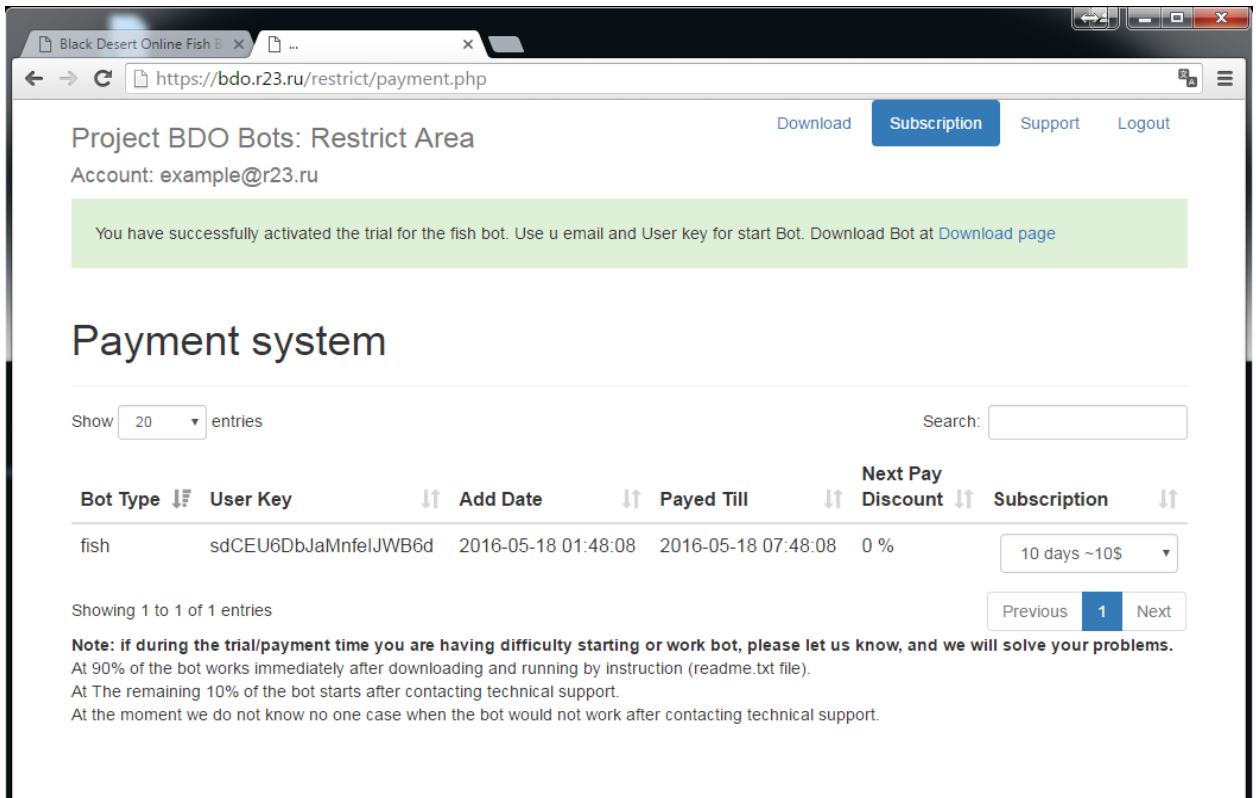
Or click on the link <https://bdo.r23.ru/restrict/loginForm.php>.

3) Enter the Email and Password.

4) Press the button «Sign In».

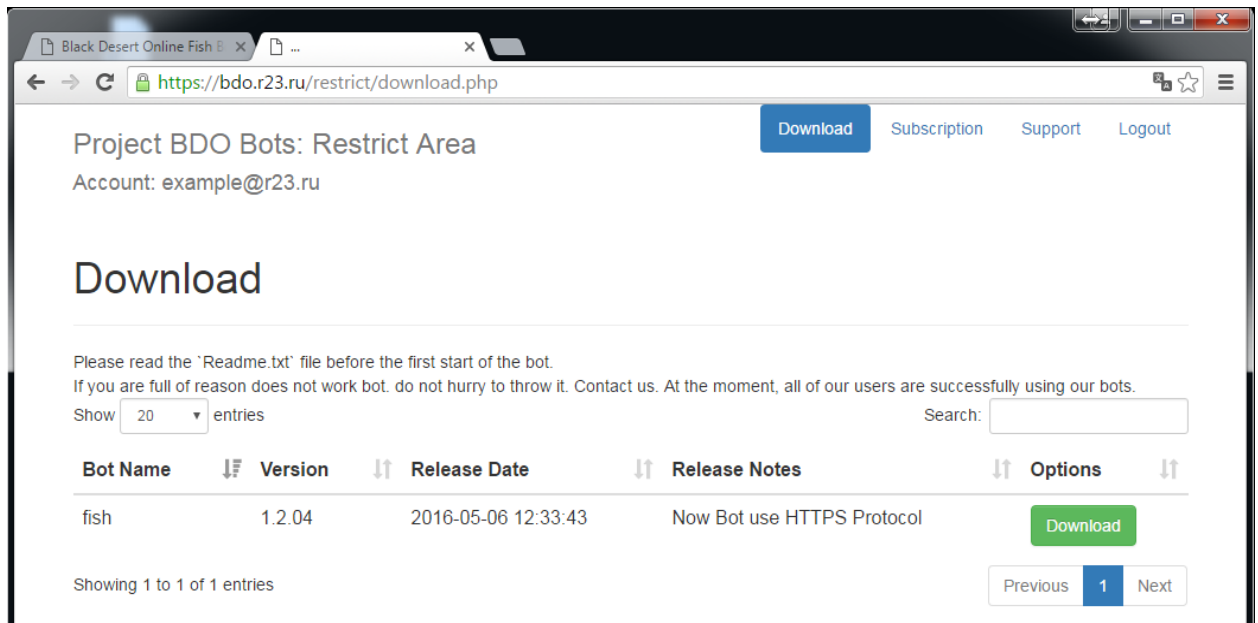


5) On the «Subscription» page, press the button «Get Trial».



6) After the trial activation, you can see your key and the date of its completion, as well as, if necessary, in the future you can extend the key on this page.

7) To download the bot go to the page «Download».



Installation, initial start-up and setting the bot

1) Download Bot.

2) Unzip the bot in your convenient directory

Note: the path to the bot should not contain "space" character.

3) Before starting the bot should download and install the following libraries from the Microsoft website:

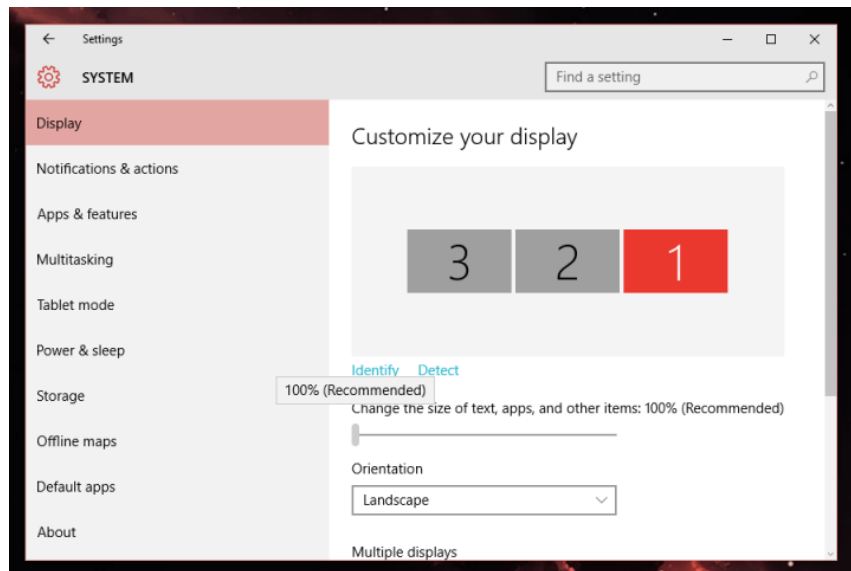
Visual C ++ to Visual Studio 2012 (<https://www.microsoft.com/en-us/download/details.aspx?id=30679>)

Visual C ++ to Visual Studio 2013 (<https://www.microsoft.com/en-us/download/details.aspx?id=40784>)

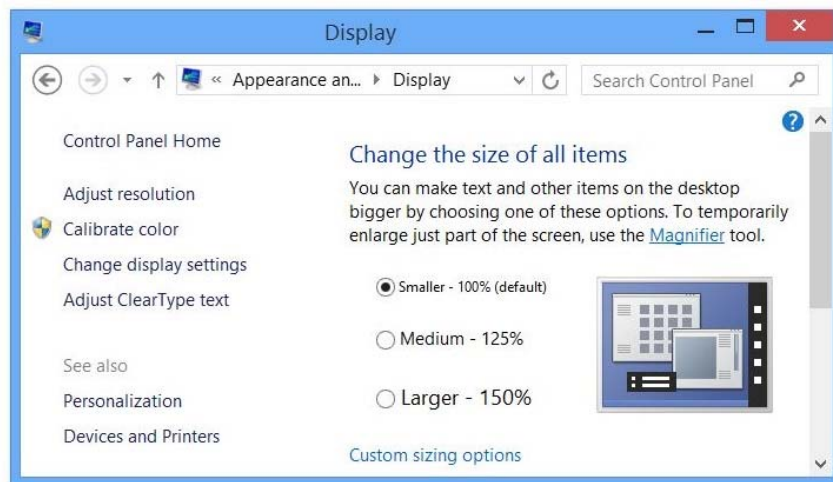
Visual C ++ to Visual Studio 2015 (<https://www.microsoft.com/en-us/download/details.aspx?id=48145>)

4) MAKE TEXT AND OTHER ITEMS LARGER OR SMALLER-> SET TO 100% and restart windows)

Example Win 10:



Example Win 7:



5) Start the game.

6) Check the settings of the game:

Game Photo Filter: Vibrance

Reset Game User Interface to default (100% size)

Step 1: Press «Esc» key on keyboard

Step 2: Press button «Edit UI»



Step 3: Set slider to 100% and press button «Save»



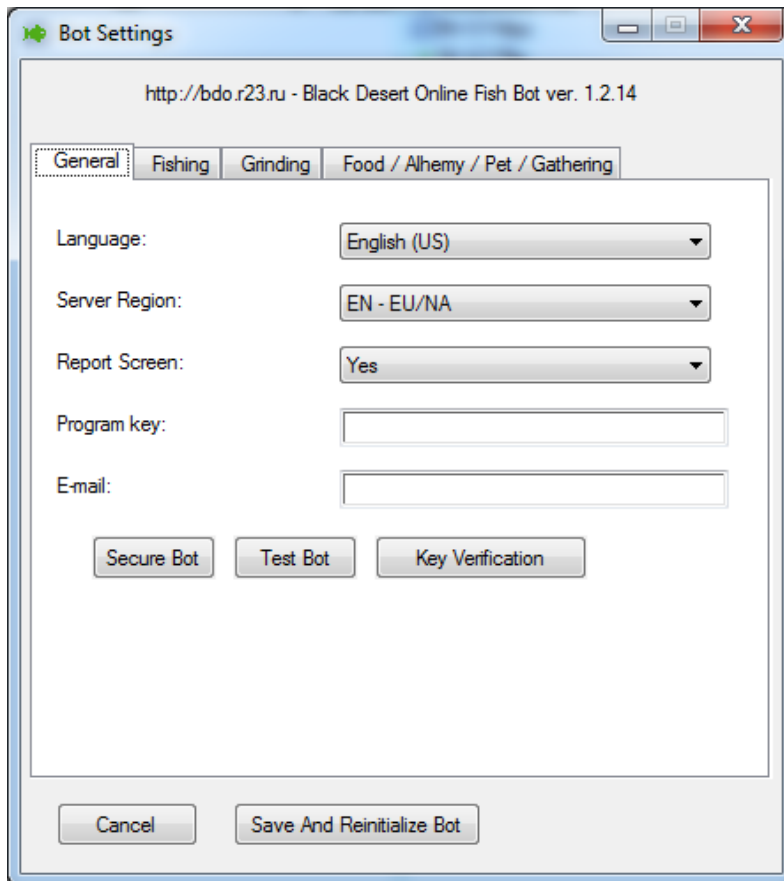
Step 4: Repeat Step1, Step2 and Press Button «Reset»

7) Start Bot

Starting the bot produced file fbot ****. exe

8) If this is first run, then open settings panel (if this did not happen - press Alt + 9)

GENERAL



9) Press «Secure Bot» - This function generate new name for your bot and create 2 new links on new named bot: on your desktop and in bot folder, after this bot restart

10) Enter the Program Key and Email

11) Hit «Verify Key» Button

If you get answer another then «0900: Your Account active», Inform bot developers - they activate your account

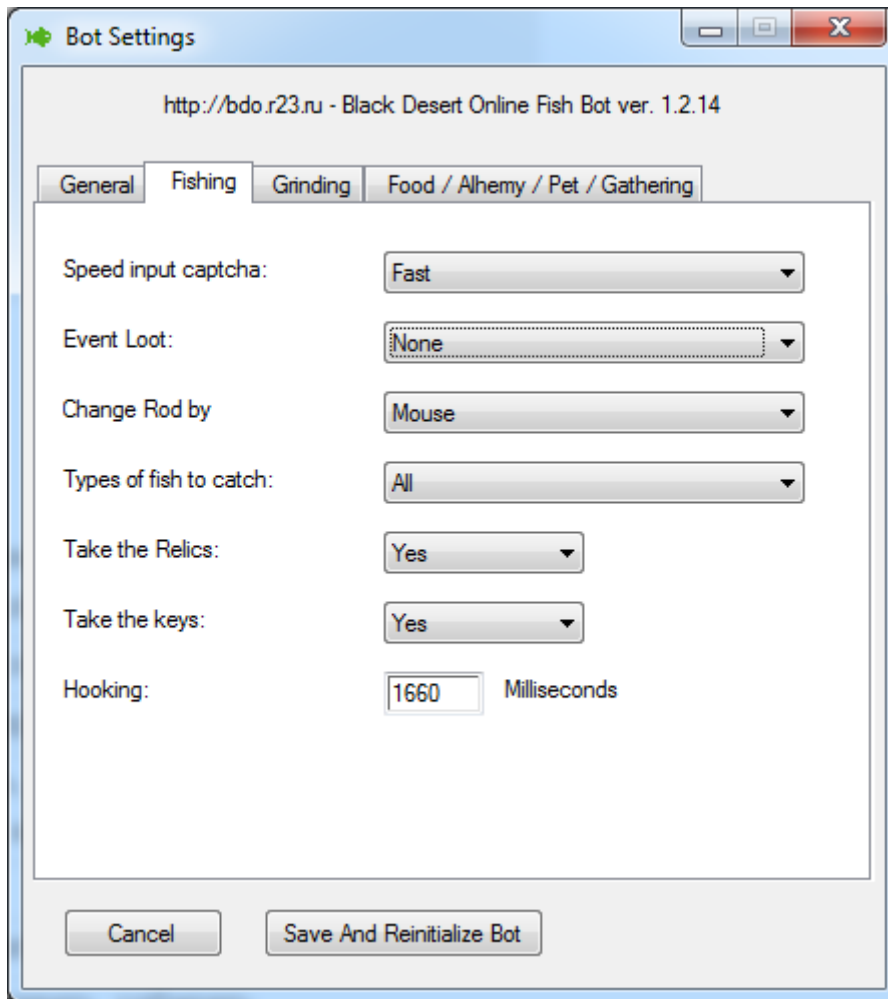
12) Set up a Bot to your liking:

Language: select your preferred language (English (US), Русский, Deutsch, Français, 日本の, 한국의, 繁體中文, Türkçe)

Region: select region where you play (EN - EU/NA, DE - EU/NA, FR - EU/NA, JP, KR, KR-EN)

Report Screen: select show on screen report in top-left corner or not.

FISHING



Speed input captcha (slow/fast): Bot input captcha maximal fast or maximal slow

Event Loot: types of Event loot collect

Change Rod by Mouse/HotKey1-6. -

If you choose a mouse: Bot fishing rod will change by selecting them from your inventory. In this mode, the type and number of rods in the inventory is not important. However, leave the bot with opened the inventory window but closed character clothes window.

Hotkey1-6: in this mode, take inventory in different kinds (one kind but different grade = different kind) of fishing rods for 2 pieces and put them on the hot keys from 1 to 6

example: 2 x white rods and 2 x blue rod in your inventory and on hot keys 1- white rod, 2 - blue rod

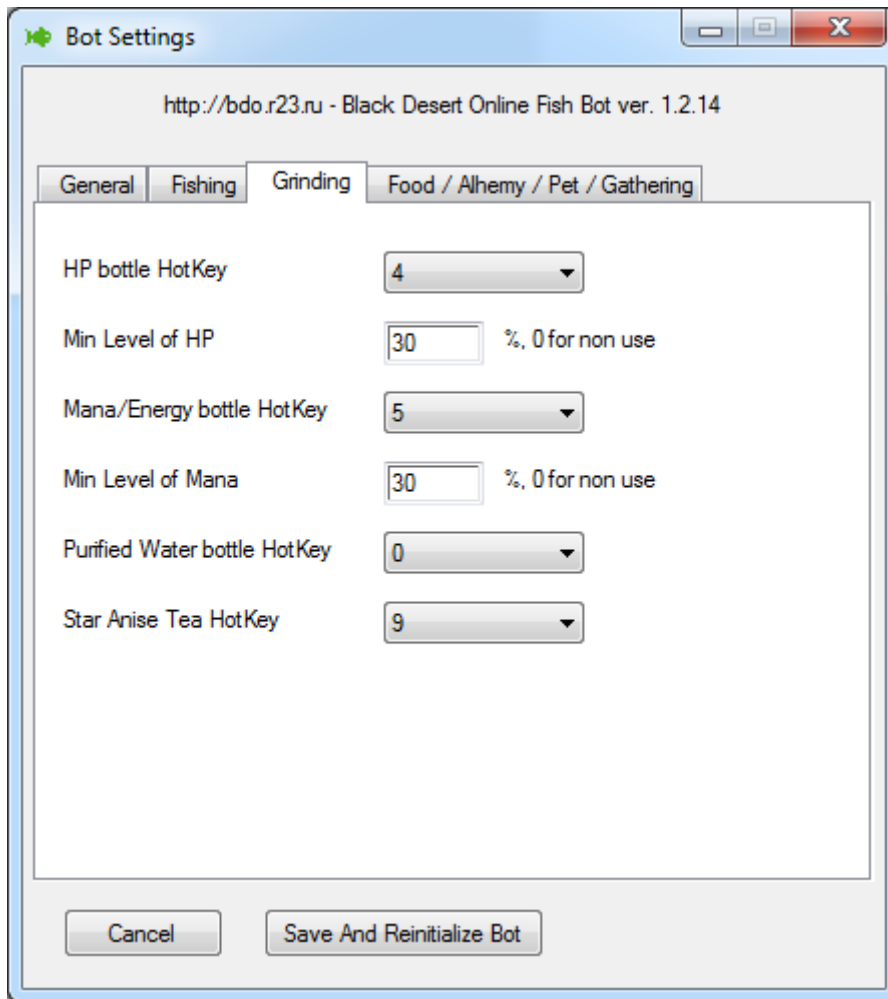
Best type is change rod by Mouse

Types of fish to catch - fish what u preferred to pick up (All, Green and up, Blue and up, Gold, Only Coelacanth)

Take the Relics, Take the Keys – collect relics, keys (Yes, No)

Hooking: delay in milliseconds between «spaces» for hooking fish

GRINDING



HP bottle HotKey - choose hotkey (only 0-9) where is set HP bottle

Min Level of HP - set % of HP when u need use HP bottle, set 0 to disable

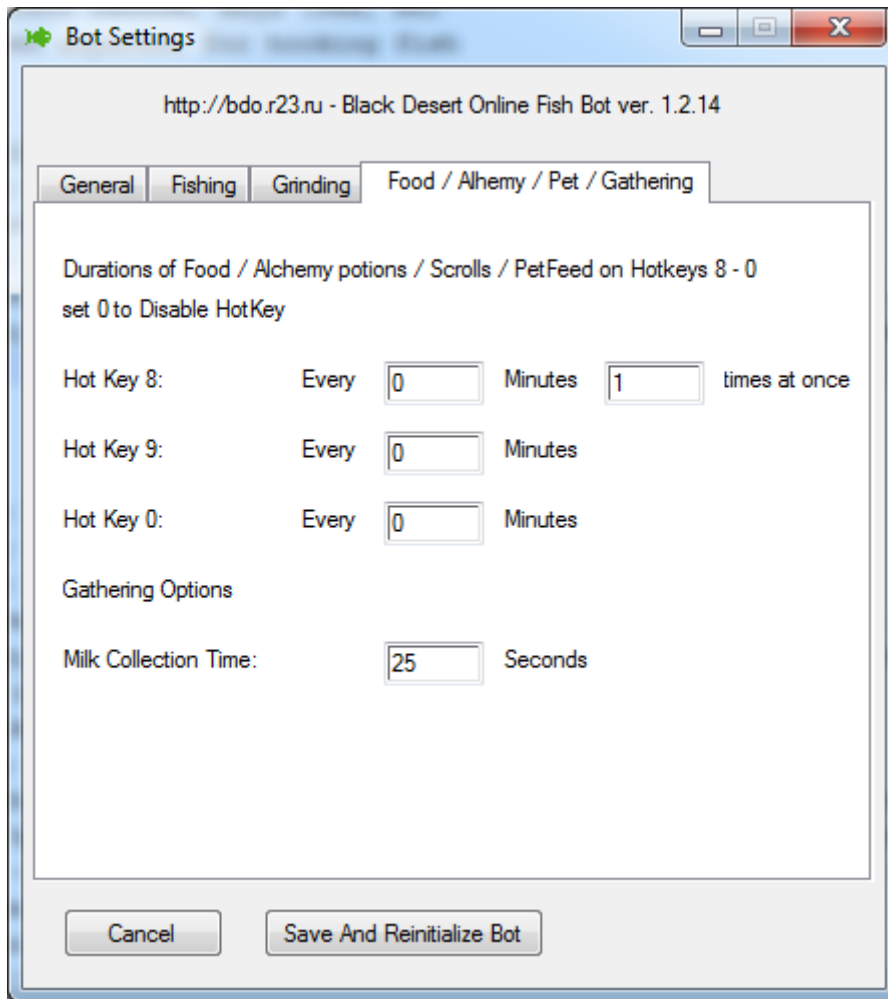
Mana/Energy bottle HotKey - choose hotkey (only 0-9) where is set Mana/Energy bottle

Min Level of Mana - set % of hp when u need use Mana/Energy bottle, set 0 to disable

Purified Water bottle HotKey - choose hotkey (only 0-9) where is set Purified Water bottle HotKey (to remove desert day debuff)

Star Anise Tea HotKey - choose hotkey (only 0-9) where is set Star Anise Tea HotKey (to remove desert night debuff)

FOOD / ALHEMY / PET / GATHERING



Hotkey 8: Duration of item on hotkey 8 (Food, Alchemy, Scroll, PetFood)

Second input filed: how much times use hotkey 8 at once (uses for Pet Feed)

Hotkey 9: Duration of item on hotkey 8 (Food, Alchemy, Scroll, Bait)

Hotkey 0: Duration of item on hotkey 8 (Food, Alchemy, Scroll)

Milk Collection Time in seconds: time depends on the level of gathering skill

12) Press Button « Save And Reinitialize Bot» to Save your settings and make a bot on your initialization settings

Use Bot

- 1) take inventory in fishing rods, the bait and food 7, 9 and 0 hotkeys
- 2) Get Rod in hand and Casting it.
- 3) Then run the bot

4) Hit Alt + 1 to remove from pause

Hot Keys

Alt + F1 - Help

Alt + Esc - turn off bot

Alt + 9 - Preferences panel

Alt + 1 - Put / remove pause **FISH Function**

Alt + 3 - Start/End Milk collect

Stay near cow (you see "Press R to interact")

Press Alt + 3 to begin milk collect

After is milk collected from cow, function is end

Alt + Shift + 3 - Start/End Batch Milk collect

Stay near cow (you see "Press R to interact")

Press Alt + Shift + 3 to begin milk collect

After is milk collected from cow bot is paused about 1.2 min to reload milk in this cow and collect milk again

Warning: the game has a limit on the collection of milk over time. cow does not give milk after collecting milk 150-200

Alt + 4 - Start/End Horse Rope Action

While u catch horse and it rears up, press Alt+4 while minigame with press space. After it done press Alt+4 again

Alt + 5 - Start/End Train stats

Upload character by sell goods

Put the character on the route

Put food on the HotKey "0"

Press Alt + 5

Alt + 7 - Start/End Watch and Use HP/Mana Bottles

WARNING: Make sure Before start function u have atleast 15% mana\hp\energy

WARNING Make sure Before start function u reset interface and hp/mana/energy is visible on default place

WARNING Don't forget ennd this function before u interact with NPC or another act which can do unvisible HP/Mana/Energy Stripes

Press Alt+7 to begin Watch and Use HP/Mana Bottles

Press Alt+7 to end Watch and Use HP/Mana Bottles

Alt + 8 - Start/End Watch and Drop Desert Debuff

WARNING Make sure Before start function u reset interface

Press Alt+8 to begin Watch and Drop Desert Debuff

Press Alt+8 to end Watch and Drop Desert Debuff

Troubleshooting

If you have any difficulty in starting or SETUP bot, you can contact the technical support at the following address: bdo@r23.ru or skype: bdo.r23